

CONSTRUCTION NOTES:

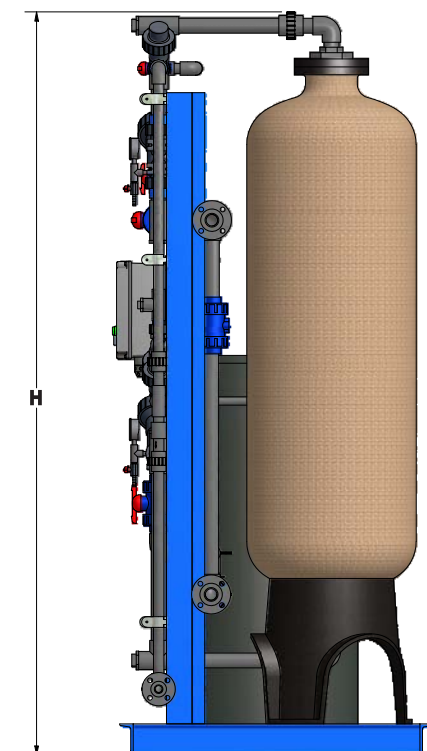
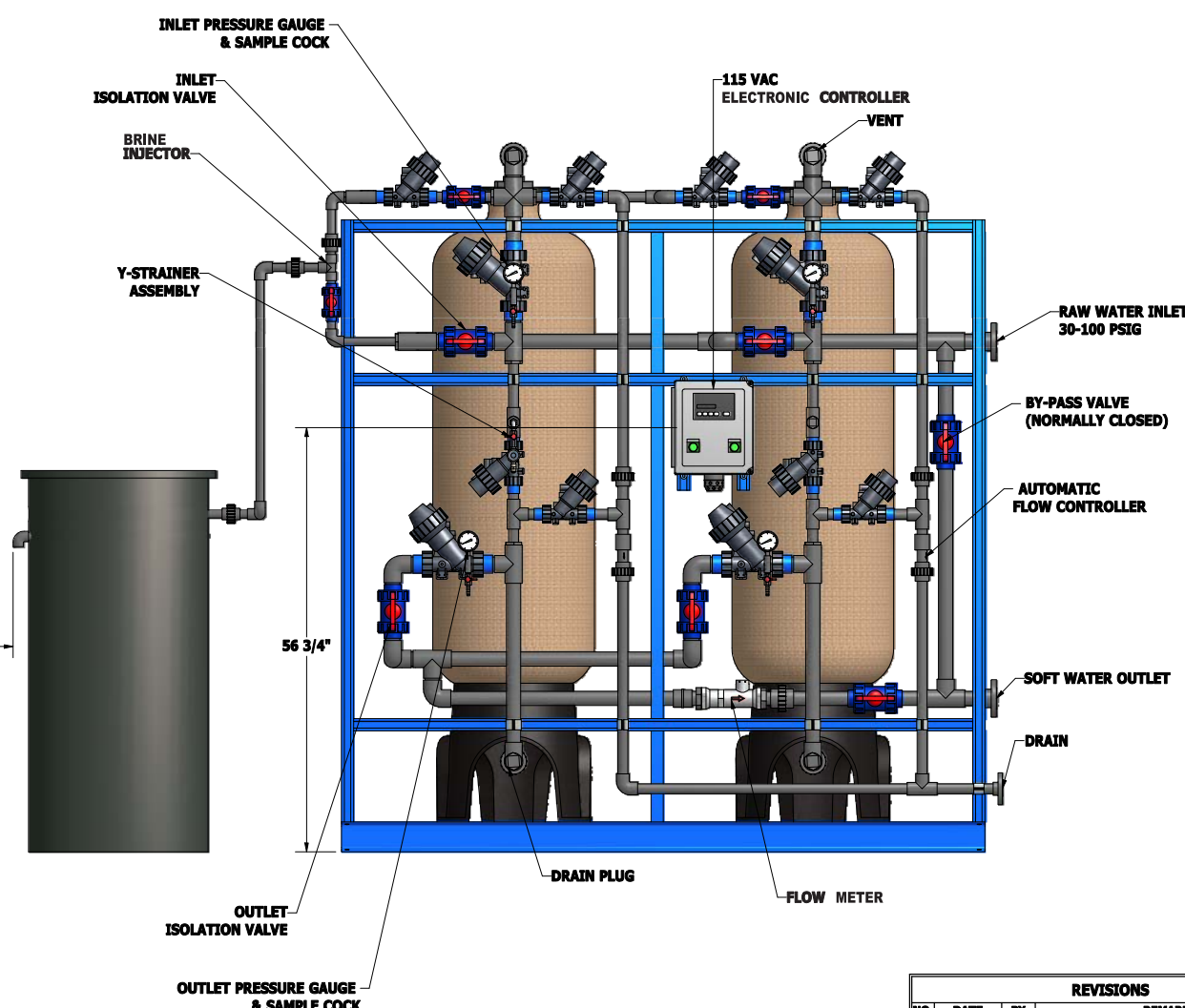
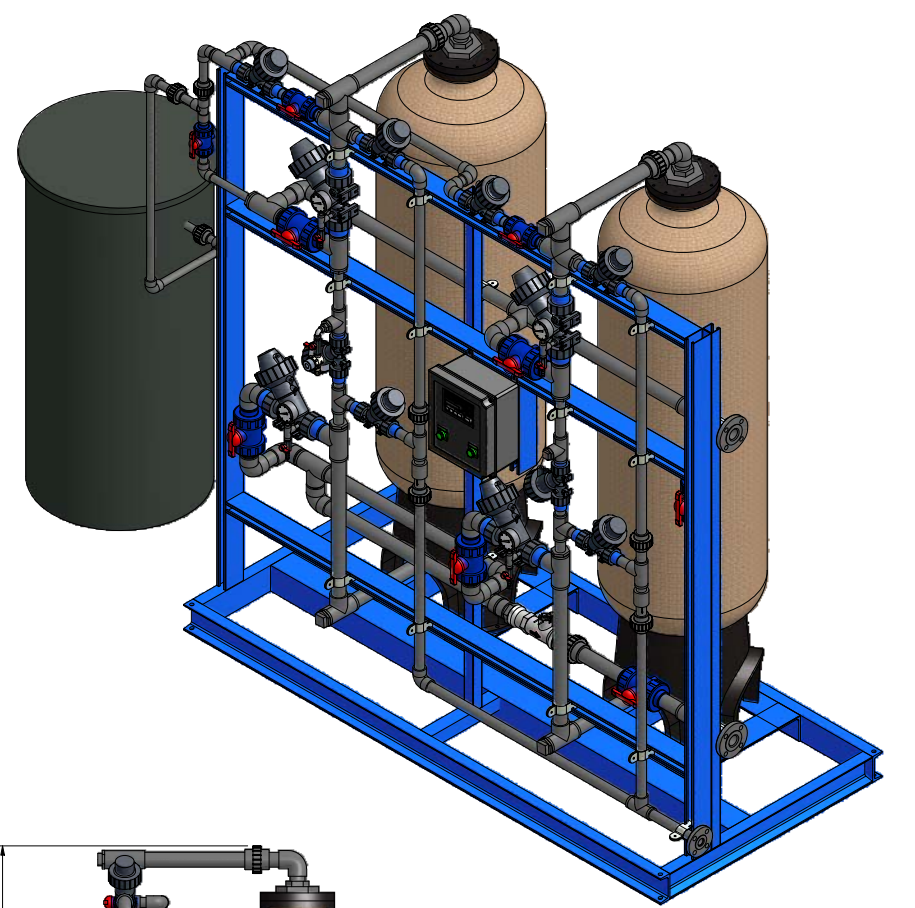
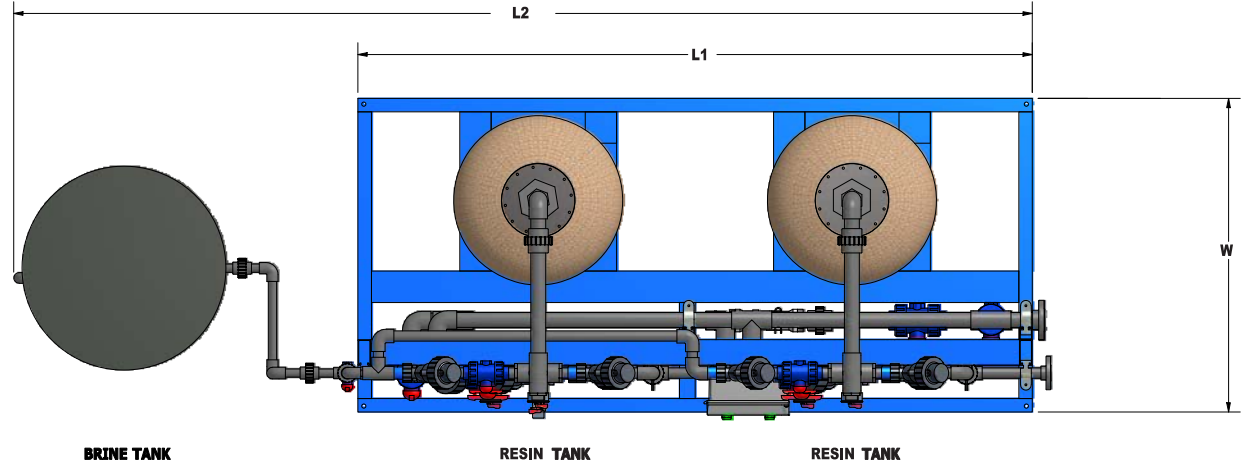
1. ALL PRESSURE VESSELS CONSTRUCTED OF POLYGLASS OR COMPOSITE MATERIAL WITH A POLYETHYLENE INTERIOR LINER. ALL VESSELS HAVE THE NSF RATING AND A 150 PSIG WORKING PRESSURE. NOTE THE SYSTEM PRESSURE RATING IS 100 PSIG
2. STRUCTURAL STEEL SKID TO BE SANDBLASTED TO A COMMERCIAL BLAST AND COATED WITH 4-6 MILS OF TNEEC SERIES 161 MARLO SAFETY BLUE EPOXY.
3. ALL PRESSURE VESSEL INTERNAL DISTRIBUTORS TO BE SCH 80 WITH ABS SLOTTED NOZZLES.
4. ALL AUTOMATIC FLOW VALVES TO BE "Y" PATTERN DIAPHRAGM OPERATED GLOBES VALVES HYDRAULICALLY OPERATED. VALVES TO BE MANUFACTURED OF ENGINEERING THERMOPLASTIC WITH PVC CONNECTIONS AND TRIM. VALVES TO BE AQUA-MATIC SERIES 530.
5. ALL MANUAL ISOLATING VALVES TO BE QUARTER TURN BALL VALVES WITH EPDM SEALS AND SOLVENT WELD OR SCREWED CONNECTIONS.
6. ALL EXTERNAL PIPING TO BE SCH 80 PVC. ALL EXTERNAL FITTINGS AND FLANGES TO BE SCH 80 PVC WITH SOCKET WELD CONNECTIONS. SOME ITEMS MAYBE THREADED WHEN REQUIRED.
7. ALL HYDRAULIC VALVE CONTROL TUBING TO BE 1/4" OD POLYETHYLENE BLACK TUBING. ALL TUBING TO BE NEATLY BUNDLED TO PIPING MANIFOLDS.
8. EACH WATER SOFTENER TO HAVE INLET AND OUTLET PRESSURE GAUGES AND SAMPLE VALVES.
9. THE WATER SOFTENER SKID TO HAVE ONE SIGNET MODEL 2536 FLOW SENSOR MOUNTED ON THE COMMON SOFT WATER OUTLET PIPING.
10. ALL ELECTRICAL CONTROL ENCLOSURES TO BE NEMA 4X FIBERGLASS. WATER SOTENER CONTROL TO BE A TWIN ALTERNATING ELECTRONIC CONTROLLER. ALL VALVES TO BE CONTROLLED BY A 16 PORT MOTOR DRIVEN PILOT STAGER.
11. ALL EXTERIOR HIGH VOLTAGE (115V OR HIGHER) WIRING TO BE CONTAINED IN EMT STEEL CONDUIT WITH LIQUID TIGHT FITTINGS. CONDUIT RUNS 6' OR SHORTER MAY BE CONTAINED IN LIQUID TIGHT FLEXIBLE CONDUIT SUITABLE FOR OUTDOOR USE. ALL EXTERIOR LOW VOLTAGE CONDUIT (24V OR LOWER) WILL BE 3 WIRE CABLE NEATLY BUNDLED WITH THE MANIFOLD PIPING.
12. **FLOW RATES PER TANK:**

SERVICE:	GPM AT A 15 PSIG PRESSURE DROP
BACKWASH:	GPM
BRINE DRAW:	GPM
SLOW RINSE:	GPM
FAST RINSE:	GPM
13. **SOFTENING MEDIA AND SUPPORT GRAVEL PER TANK:**

SOFTENING MEDIA:	CU. FT STRONG ACID CATION
LOWER SUPPORT:	LBS 1/8" X 1/16" GRAVEL
14. **SHIPPING WEIGHTS:**

EQUIPMENT ONLY:	LBS
MEDIA ONLY:	LBS
TOTAL:	LBS
15. **OPERATING WEIGHTS (INCLUDING RECOMMENDED SALT STORAGE):**

	LBS
--	-----
16. THE COMPLETE WATER SOFTENER SKID WILL HAVE A FULL HYDRO-TEST BEFORE SHIPPING AT 100 PSIG FOR 2 HOURS TO INSURE THE SKID TO BE LEAK FREE BEFORE SHIPPING. IF MINOR LEAKS OCCUR AFTER START-UP MARLO WOULD NOT CONSIDER THOSE LEAKS TO BE COVERED UNDER THE NORMAL EQUIPMENT WARRANTY.



DIMENSION TABLE		MRG - _____
L1 = _____	L2 = _____	
W = _____	RT = _____	
H = _____	BT = _____	

PIPE SIZES	
INLET = _____	DRAIN = _____
OUTLET = _____	INJECTOR = _____

REVISIONS				
NO.	DATE	BY	REVISIONS	REMARKS



'MRG' TWIN SOFTENER SKID GENERAL ARRANGEMENT			
FRAC. ±	DEC. ±	FILE ID.	
DRN. ±	MARK	SCALE	SHEET 1 OF 1
APPD.		DRAWING NO.	
DATE 11/30/2009			

5-262.01